



# summer Prayer Labyrinth

Most of us take a holiday at some time, time out of our everyday busyness to recharge our batteries.

Our holiday usually involves a journey, however long or short.

When we are on holiday we usually relax and enjoy different activities and different places.

This Summer Labyrinth allows us to make a journey and take time out to experience some different activities in a quiet space.

It is hoped that the experience will have a sense of having had a 'Holy Day' bringing us closer to God and deepening our understanding of our inner self.

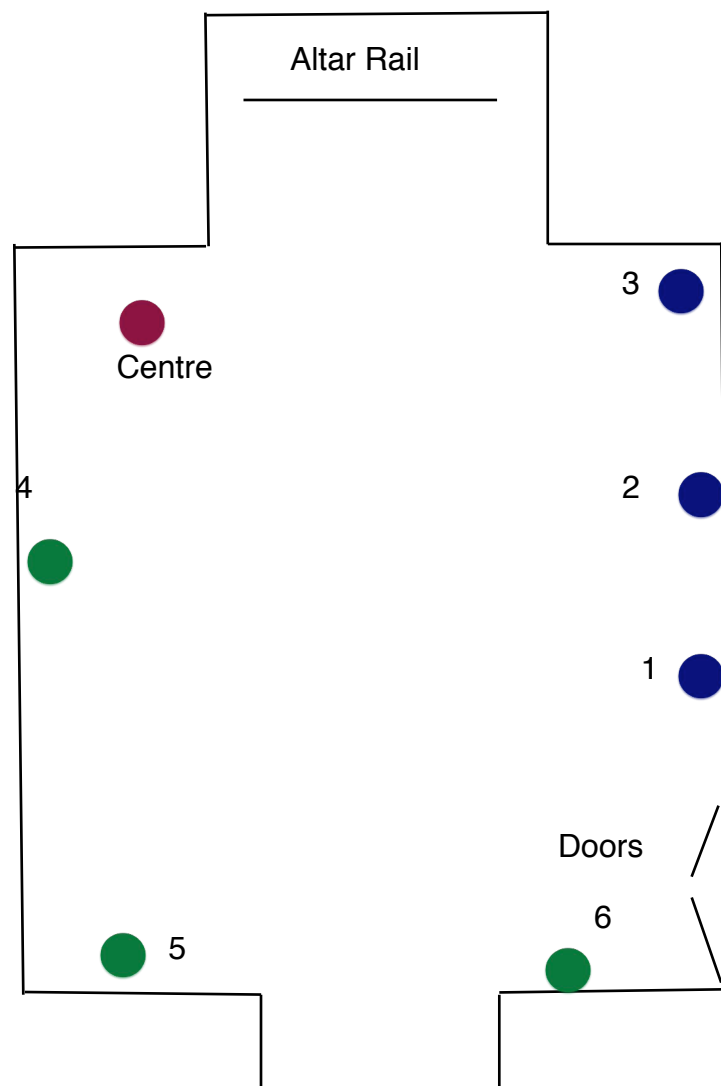
## Church Layout.

The journey begins at the back of the church by the doors and then the inward journey works its way up the centre aisle to the Sanctuary steps.

The outward journey works its way down the left aisle back to the entrance.

This can be adapted for any space.

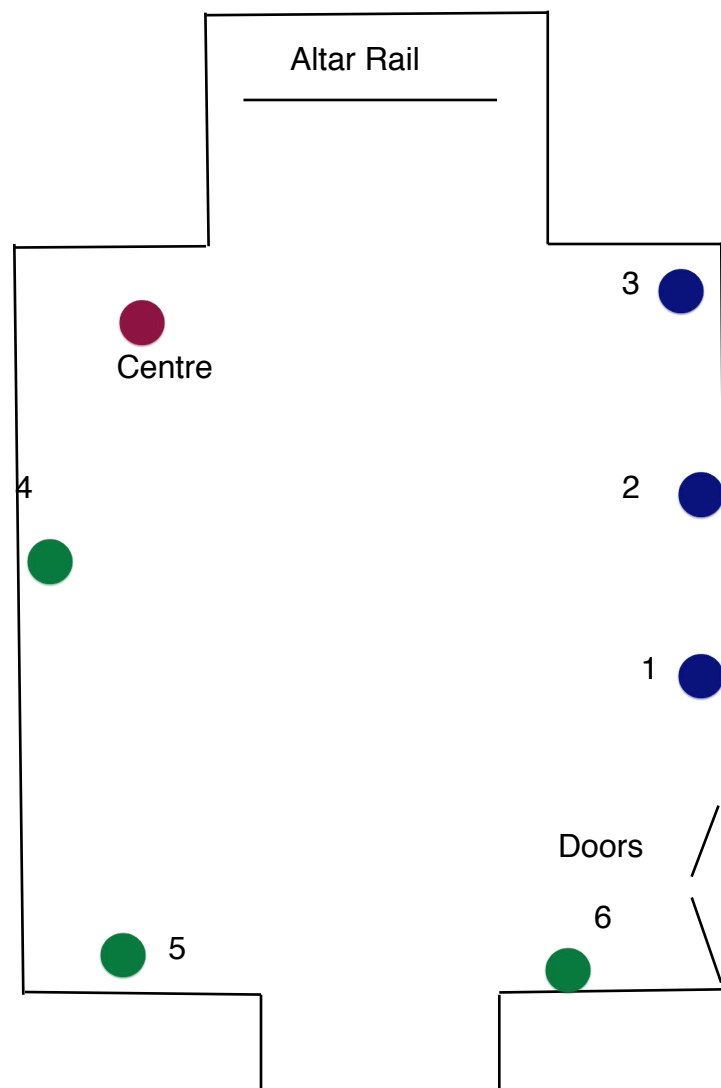
It could also be used outside in the church yard, weather permitting.



## Church Layout.

The journey begins at the back of the church by the first window on the right, then the inward journey works its way winding in and out of the pews, using the window sills as stopping places with activities and meditations. This journey takes us to the centre in the Lady Chapel. where we can pause for as long as we like.

The outward journey works its way down the left aisle and back to the entrance





# Station

# 1

The fishing nets are used for the work of catching fish.

As you begin your journey, remember your work and the things that hold on to you.

Lay each thing down before God and let them go for this time

When you are ready, move on to Station 2

**Creator God  
on windswept beaches  
your saints of old  
held their hands up to you  
in wonder and amazement  
felt your power through the roar  
of wind and surf, and  
exposed to the elements  
felt a unity  
with the One  
who had created all things.  
This world does not often allow us  
such intimacy, Father  
we are crowded out  
by circumstances of our own choosing  
seeking fellowship with each other  
rather than with you.  
Forgive our unwillingness  
to follow in the footsteps of your saints  
to meet you in the solitude of your creation  
Forgive our unwillingness  
to get our feet wet**





# Station

# 2

Take a stone from the pile.

Think of the journey this stone has made, where it has been, what it has been through to reach this place.

How does it relate to your life journey?

Offer the places you have been and the experiences you have had to God by placing your stone by the cross.

When you are ready, move to Station 3

**For each step that I might take  
Be my guide, O Lord of life  
For each load that I might bear  
Be my strength, O Lord of life  
For each mountain I might face  
Be my power, O Lord of life  
For each river that might impede  
Be my safety, O Lord of life  
For each place where I might rest  
Be my peace, O Lord of life  
For each sunrise and sunset  
Be my joy, O Lord of life**

Read more at: <http://www.faithandworship.com>





# Station

# 3

Choose a piece of drift wood.

Look closely at it. Feel its texture.

It has been thrown around in the sea and over time and it has been worn away, yet it is beautiful and the strong part remains.

How does this relate to you?

Recognise your beauty and strength.

When you are ready, move on to the centre.

**This world  
is not the accomplishment  
of a moment of your time, Lord  
that we can see clearly.  
Those rugged cliffs  
thrust from the depths of the sea  
filled with the evidence of the past  
were not created in the blinking of an eye.  
The diamond's hardness  
did not come suddenly.  
This is the work of an infinite patience  
the creation of something  
of which its creator could be pleased.  
And now Lord, this infinite patience,  
this creative love is directed towards us  
formed as we are from the very elements  
of the world in which we live.  
Your creative Spirit still at work  
tireless, ceaseless  
endlessly creating in our hearts the  
image of your likeness.  
The only difference being  
the diamond had no choice  
in whether it would be transformed  
into such beauty**

Read more at: <http://www.faithandworship.com>

# The Centre

A purple tent is pitched on a green lawn. Inside the tent, a striped folding chair is set up. The tent's interior is a darker shade of purple. The background shows a grassy field with some yellow wildflowers and a line of trees in the distance.

A still place

A protected space

A quiet place

A space to think

A Space to be

Time to be

Enfolded by peace.

Soon you will need to move on, to begin your journey back into the world outside, but now rest in God's presence, protected by Him, for as long as you like.

In your own time move on to Station 4



**You are the peace of all things  
calm**

**You are the place to hide from  
harm**

**You are the light that shines in  
dark**

**You are the heart's eternal spark**

**You are the door that's open wide**

**You are the guest who waits inside**

**You are the stranger at the door**

**You are the calling of the poor**

**You are my Lord and with me still**

**You are my love, keep me from ill**

**You are the light, the truth, the way**

**You are my Saviour this very day.**

celtic oral tradition - 1st millennium



# Station

# 4

Water -

Life giving, cleansing, powerful.

Think about the water, put your hands in it, experience it.

Think of the things water means to you in your life.

Thank God for His life giving gifts.

When you are ready, move on to Station 5

**Lord of the morning  
of dawn chorus  
rising sun  
mist on water  
day begun**

**Lord of the noontime  
of chattering voices  
laughter and fun  
sparkling water  
EVERYONE**

**Lord of the evening  
of quiet breeze  
setting sun  
gentle waters  
day that's done**

**Like a mountain stream  
exuberant in it's flow  
you carry us  
into the river of your love  
and transport us  
gloriously  
effortlessly  
to the ocean of your grace**





# Station

# 5

Here you can build a sand-castle, make shapes, enjoy being a child.  
Take as long as you like playing in the sand.

Remember all the fun things God has given us to bring us pleasure.

Think of all the people we can share these times with and the  
places we can be.

When you are ready, move on to station 6

**Heavenly Father  
we meet together  
your people  
one people  
your family  
bound together  
with the woven chord  
that binds all of creation together  
fashioned from your love.  
Brothers and sisters  
children together  
One family in fellowship  
with you, its Heavenly Father.  
May this be a time of joy  
a time for growing  
a time for strengthening  
a time for loving  
family time  
quality time  
together.**



# Station

# 6

Look at the shells, pick them up and look at their shape and colours.

Think of the amazing variety of shells there are. Let them remind us of the variety there is in life around us - people and animals, trees and flowers

Think about God's creation we see all around us

Thank Him for making so many things for us to enjoy in the world

When you are ready, move on back out to enjoy the world outside

**Every creature, every plant  
every rock and grain of sand  
proclaims the glory of its Creator  
worships through colour, shape  
scent and form.**

**A multi-sensory song of praise.  
Creator God, may we join  
with the whole of your creation  
in praising you, our Creator  
through the fragrance  
and melody of our lives**





# Summer Prayer Labyrinth

**St. Mary's Church  
Llanfair Caereinion  
Open Daily from 10am to  
4pm  
24th July to 31st August**

This Summer Labyrinth allows us to make a journey and take time out to experience some different activities in a quiet space.